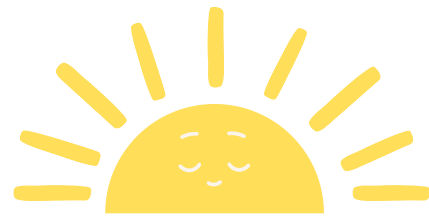


# GRACE WEEKLY



February 6, 2026

## UPCOMING

### SCHOOL CLEANERS

February 6 – M. Vandever  
February 13 – R. Vandever

### Sunday, February 8

Sunday School/Bible Class 9:00 am  
Church 10:00 am

### Tuesday, February 10

Student Fair Due:  
Outlines and note cards  
coded to outline

### Friday, February 13

Valentines Day Party

### Monday, February 16

NO SCHOOL

March 13-20  
**Spring Break**



## MEMORY WORK



### Hymnology: Due Mon., Feb. 9

TLH #428: I Am Trusting Thee Lord,  
Jesus

**Gr. 1-2:** v. 1-2

**Gr. 3-8:** v. 1-3

### Bible Passages: Due Wed., Feb. 11

**Gr. 1:** Ps. 106:1

**Gr. 2:** Ps. 106:1; James 4:11

**Gr. 3-4:** James 4:11; 1 Pet. 4:8

**Gr. 5:** Mark 16:15; Matt. 28:18-20

### Catechism: Due Fri., Feb. 13

The 2<sup>nd</sup> Article, part 1

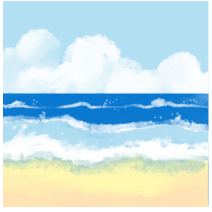
### Kindergarten:

**Hymn:** I Am Trusting Thee Lord  
Jesus

**Bible Passage:** Ps. 51:10

**Catechism:** The 2<sup>nd</sup> Article, part 1

# Friday Notes



Last week's Giggle Corner: What did the ocean say to the beach?  
Answer: Nothing – it just waved.

- ★ The Valentine's Day party is next Friday. There will be a lunch provided. A list of student names will be sent next week so that you have all of the names/spellings for everyone. The children may bring their Valentine boxes the morning of the 13<sup>th</sup>.



## Giggle Corner

**What do you call a fake noodle?**

